

# ZTF Zirnhelt Timber Frames

*Sustainable by Design*

## *The Winkley Creek*

### *At a Glance:*

<i>Main (36' x 36')</i>	<i>1,296 sq ft</i>
<i>Loft (36' x 24')</i>	<i>864 sq ft</i>
<i>Bedrooms</i>	<i>3</i>
<i>Bathrooms</i>	<i>2</i>
<i>Total Living Space</i>	<i>2,160 sq ft</i>
<i>Covered Porches</i>	<i>636 sq ft</i>
<i>Total Footprint</i>	<i>1,932 sq ft</i>



*This home designed by: Zirnhelt Timber Frames*

The Winkley Creek is a classic Zirnhelt Timber Frame with solid square log infill walls (beetle-killed pine), large shed dormers and spacious covered porches. The remote location overlooking beautiful Quesnel Lake makes for an amazing get-away with water access to the Cariboo Mountains.

The great room is designed for entertaining in all seasons (with the covered side deck as a convenient detour for those wanting to avoid the fray and slip onto the front deck for cocktail hour) and a fireplace to warm up by after a day out in the winter. The covered decks, heavy timber roof system and large overhangs are designed to protect the building for centuries.

**Call or email us to start your sustainable building project. Visit our site, meet our crew, and tour a Zirnhelt Timber Frame home.**

**We look forward to working with you!**

---

**[www.ZTFrames.com](http://www.ZTFrames.com)**

250.243.0055 | cell: 250.392.0103 | fax 250.243.2419 | [info@ZTFrames.com](mailto:info@ZTFrames.com)

# ZTF Zirnhelt Timber Frames

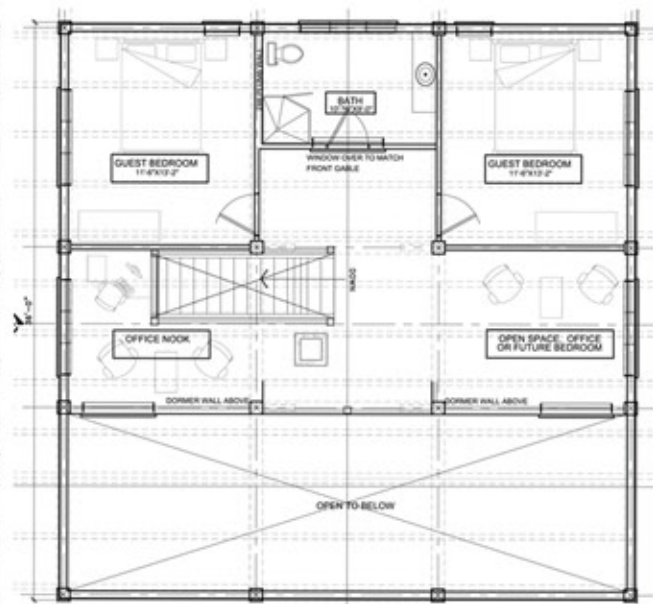
*The Winkley Creek*



Main Level Floor Plan



Loft Floor Plan



*Healthy Homes for Sustainable Living*

[www.ZTFrames.com](http://www.ZTFrames.com)

250.243.0055 | fax 250.243.2419 | [info@ZTFrames.com](mailto:info@ZTFrames.com)