

# ZTF Zirnhelt Timber Frames

## *Powderking Ski Chalet*

*Sustainable by Design*

### *At a Glance:*

<i>Main 26 x 26</i>	<i>676 sq ft</i>
<i>Loft</i>	<i>338 sq ft</i>
<i>Basement 26 x 26</i>	<i>676 sq ft</i>
<i>Bedrooms</i>	<i>4</i>
<i>Bathrooms</i>	<i>2</i>
<i>Total Living Space</i>	<i>1,014 sq ft</i>
<i>more bedrooms optional in basement</i>	



*The Powderking Ski Chalet makes exceptional use of a small footprint and is designed to handle a 300 lb snow load. With two small master bedrooms, 2 kids rooms upstairs, and several options for extra bedrooms in the basement, there's room for 2 families plus guests. A large mudroom helps keep the main 26' x 26' living space open (and provides room for skis and gear). In fact, the great room is as spacious as many larger homes. There's room for a hot tub on the front deck and a pool table in the basement. There are many options to modify this plan. For example, you could have just a master bedroom and ensuite upstairs and vault a portion of the living/dining area. In the future, it could be made into a retirement home by adding a main level addition with a master bedroom, similar to the Yukon Phase 2 plan*

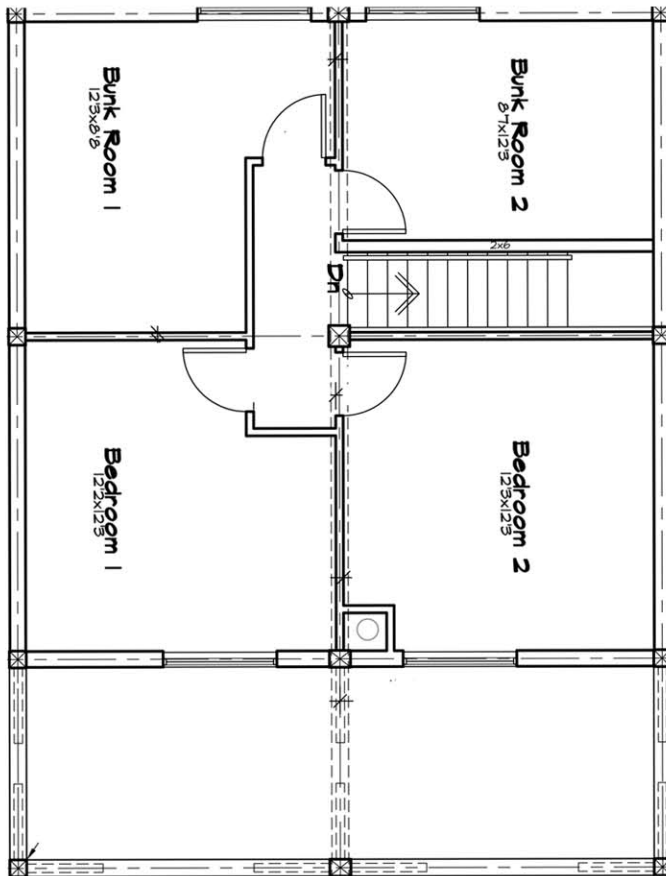
*Healthy Homes for Sustainable Living*

[www.ZTFrames.com](http://www.ZTFrames.com)

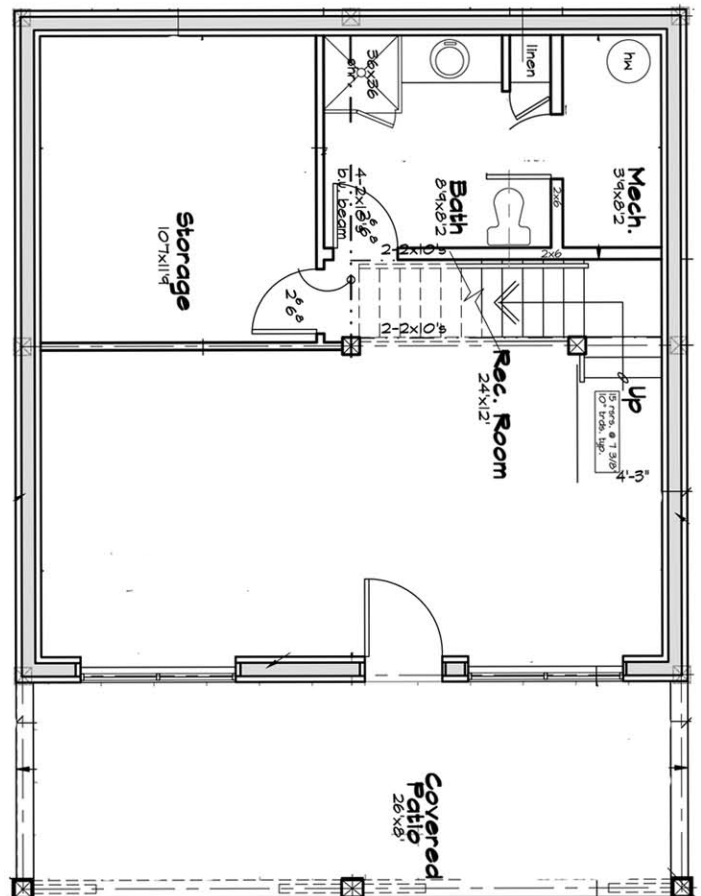
250.243.0055 | fax 250.243.2419 | [info@ZTFrames.com](mailto:info@ZTFrames.com)

# ZTF Zirnhelt Timber Frames

## *Powderking Ski Chalet*



*Loft Level Floor Plan*



*Basement Level Floor Plan*

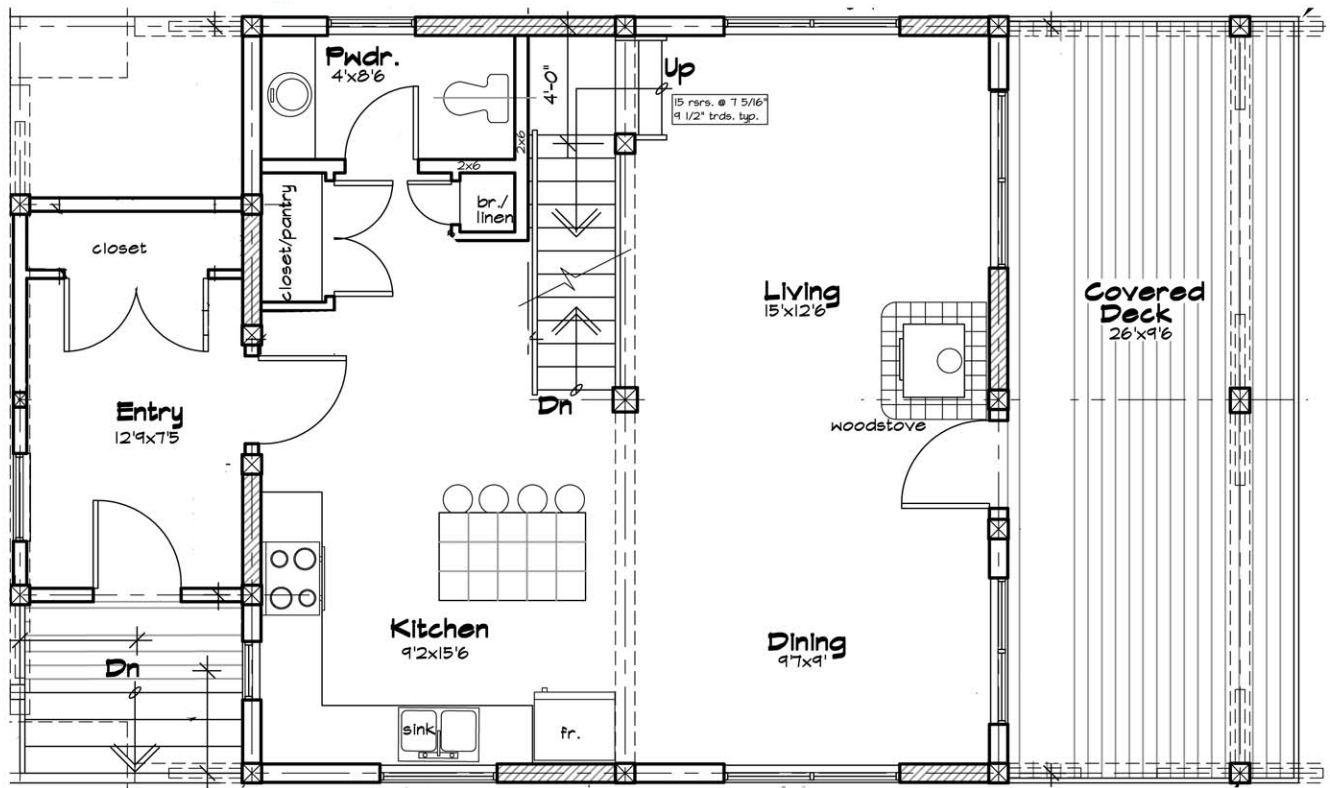
*Healthy Homes for Sustainable Living*

[www.ZTFrames.com](http://www.ZTFrames.com)

250.243.0055 | fax 250.243.2419 | [info@ZTFrames.com](mailto:info@ZTFrames.com)

# ZTF Zirnhelt Timber Frames

## *Powderking Ski Chalet*



Main Level Floor Plan



Front Elevation



Rear Elevation

*Healthy Homes for Sustainable Living*

[www.ZTFrames.com](http://www.ZTFrames.com)

250.243.0055 | fax 250.243.2419 | [info@ZTFrames.com](mailto:info@ZTFrames.com)