

ZTF Zirnhelt Timber Frames

Sustainable by Design

Frontier Estate

At a Glance:

Main	1,750 sq ft
Upper	600 sq ft
Bedrooms	3
Bathrooms	2.5

Total living space 2,350 sq ft



This home designed by: Harrison Design



This plan focuses the living on the main floor (set on a heated concrete slab foundation). The kitchen and dining spaces are cozy with the loft above while the vaulted living room showcases the heavy Douglas-fir beams above. The sunroom is a natural spot to curl up with a good book or start your plants early in the spring. The warmth of the central fire place can be enjoyed throughout the great room in any season. The master suite applies the simple formula for closet space (him = 1 unit, her = 2 units or, in more extreme cases, him = dresser, her = WIC). A glass of wine (or morning coffee) in the claws foot tub can be enjoyed with views out the 2 corner windows. The shower is there for when the wine and coffee have to wait. The main entry has it's own vaulted ceiling and opens up to the great room – perfect for welcoming company while the evidence of last minute cleaning, unloading of groceries and drying of laundry is out of site (but readily accessible if not yet out of mind) with the quick slide of a pocket door at the back of the kitchen.

Call or email us to start your sustainable building project. Visit our site, meet our crew and tour a Zirnhelt Timber Frame home.

A detailed gallery of the construction of this home has been provided by the client. To view, please copy this link into your browser

<http://mrtimberframe.blogspot.com/2009/12/timber-frame-house.html>

We look forward to working with you!

www.ZTFrames.com

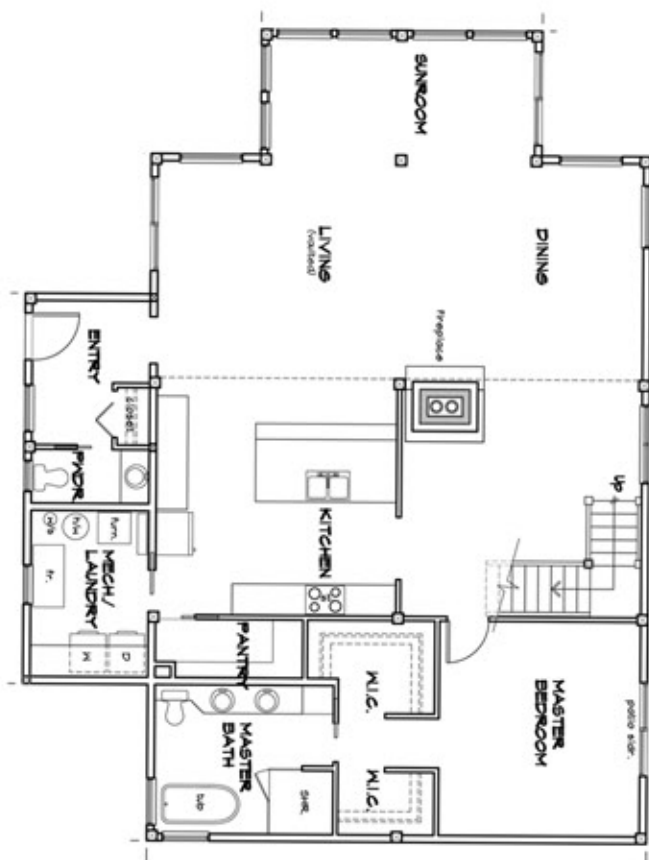
250.243.0055 | cell: 250.392.0103 | fax 250.243.2419 | info@ZTFrames.com

ZTF Zirnhelt Timber Frames

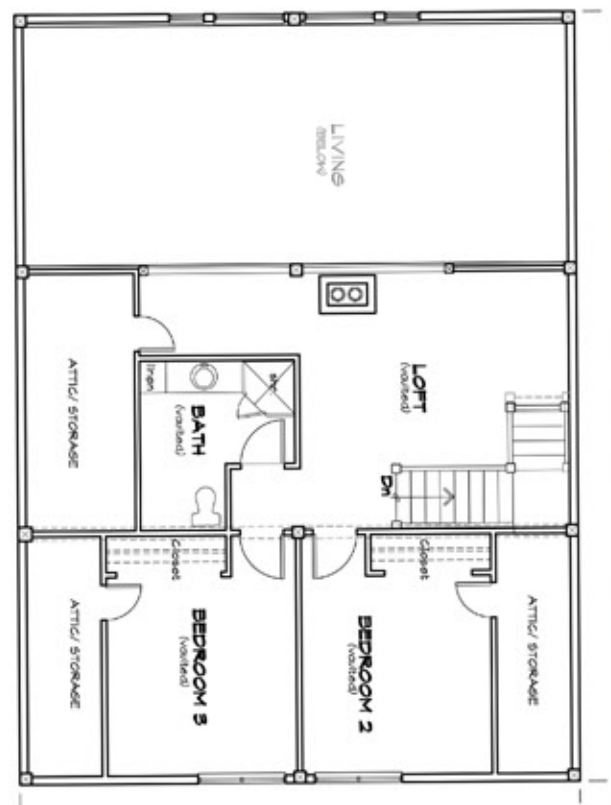
Frontier Estate



Main Level Floor Plan



Loft Floor Plan



Healthy Homes for Sustainable Living

www.ZTFrames.com

250.243.0055 | fax 250.243.2419 | info@ZTFrames.com

ZTF Zirnhelt Timber Frames

Frontier Estate



Healthy Homes for Sustainable Living

www.ZTFrames.com

250.243.0055 | fax 250.243.2419 | info@ZTFrames.com

ZTF Zirnhelt Timber Frames

Frontier Estate



Healthy Homes for Sustainable Living

www.ZTFrames.com

250.243.0055 | fax 250.243.2419 | info@ZTFrames.com