

# ZTF Zirnhelt Timber Frames

## *Green Lake Cabin*

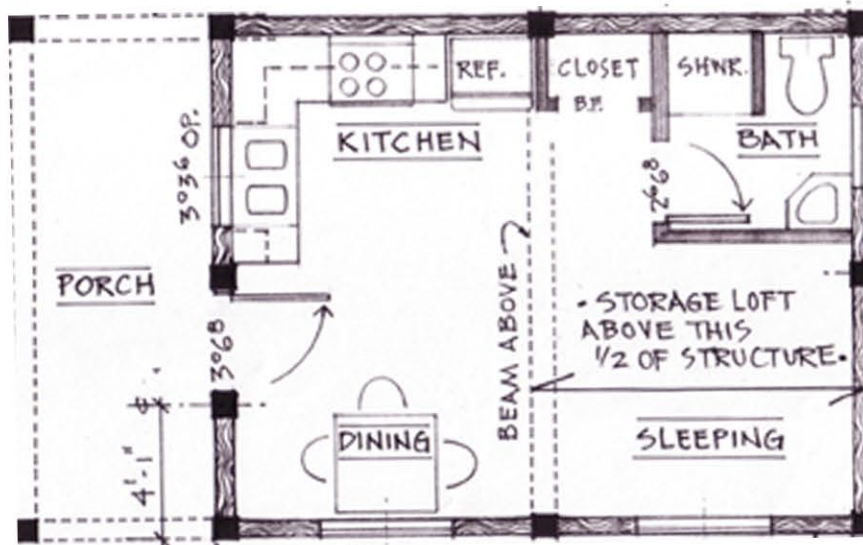
*Sustainable by Design*

### At a Glance:

Main	320 sq ft
Total living space	320 sq ft
Storage loft	160 sq ft
Bedrooms	1
Bathrooms	1
Covered Porches	64 sq ft
Total footprint	384 sq ft



Designed by: Zirnhelt Timber Frames



Floor Plan

This 16 x 20 cabin is perfect for weekends at the lake or as a guest house on your property. The open floor plan allows for a sleeping area, kitchen, living room and a full bathroom.

Call or email us to start your sustainable building project. Visit our site, meet our crew and tour a Zirnhelt Timber Frame home.

We look forward to working with you!

[www.ZTFrames.com](http://www.ZTFrames.com)

250.243.0055 | cell: 250.392.0103 | fax 250.243.2419 | [info@ZTFrames.com](mailto:info@ZTFrames.com)