

# ZTF Zirnhelt Timber Frames

*Sustainable by Design*

## *Tyee Carriage House*

### *At a Glance:*

Main (36' x 36')      1,296 sq ft  
Upper Level      1,040 sq ft

Lean-to  
(12' x 36')      432 sq ft



*This plan designed by: Harrison Design*



The Tyee Carriage House has a roomy 2 car garage with extra shop space on the lower level. The upstairs is perfect for wood working, an art/craft studio or guest accommodation. The large gables provide with plenty of natural light, views in each direction and a covered balcony. The side lean-to adds covered space for your boat, snow machines, hay bales, firewood or extra vehicles.

Call or email us to start your sustainable building project. Visit our site, meet our crew and tour a Zirnhelt Timber Frame home.

We look forward to working with you!

[www.ZTFrames.com](http://www.ZTFrames.com)

250.243.0055 | cell: 250.392.0103 | fax 250.243.2419 | [info@ZTFrames.com](mailto:info@ZTFrames.com)

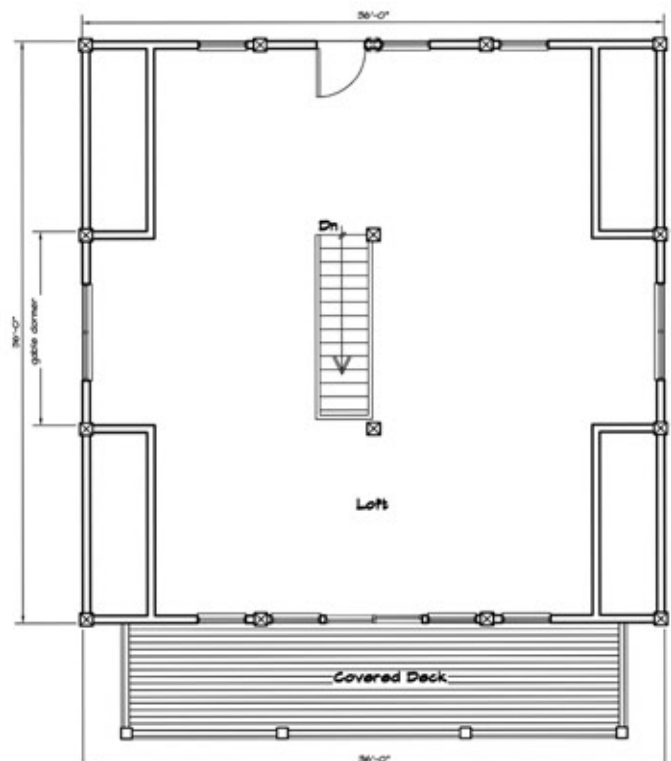
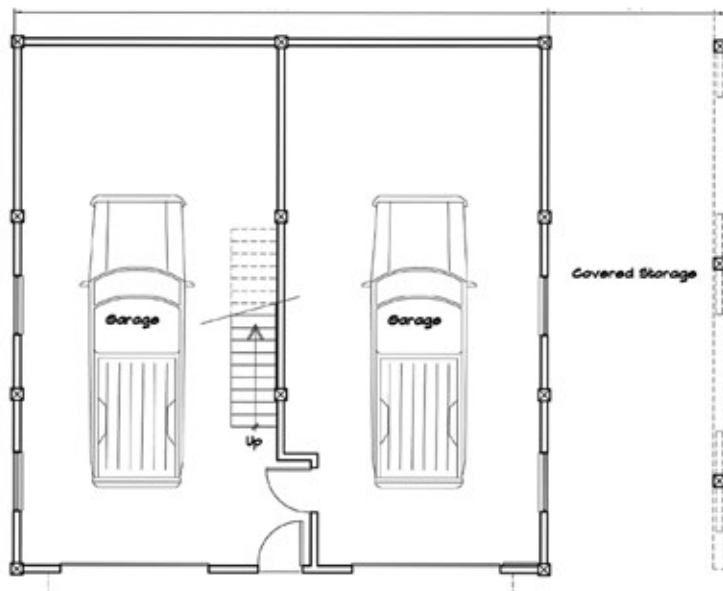
# ZTF Zirnhelt Timber Frames

## *Tyce Carriage House*



Main Level

Upper Level



*Healthy Homes for Sustainable Living*

[www.ZTFrames.com](http://www.ZTFrames.com)

250.243.0055 | fax 250.243.2419 | [info@ZTFrames.com](mailto:info@ZTFrames.com)